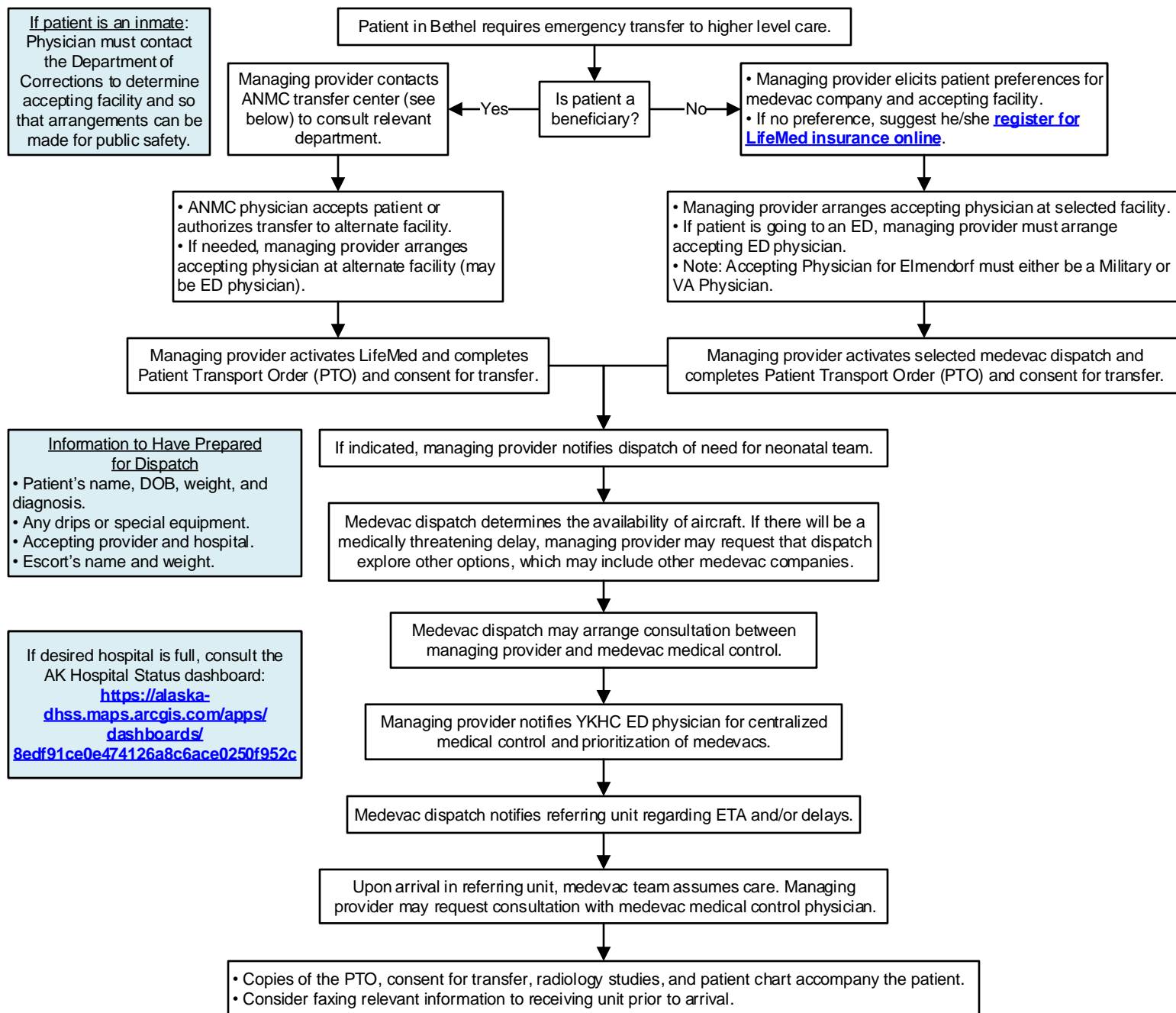




Yukon-Kuskokwim HEALTH CORPORATION

Treatment Protocol

Medevac Activation: Bethel to Anchorage



Phone Numbers

- LifeMed Dispatch: *96 or (800) 478-5433
- Alaska Native Medical Center: Main operator: *97 or (907) 563-2662
Transfer Center: (907) 729-2337 or Tiger Text ANMC Transfer Center Coordinator
ED: (907) 729-1729
- Providence Alaska Medical Center: Main operator: (907) 562-2211
Transfer Center: (907) 212-7363
Trauma on call: (907) 212-2525
ED: (907) 212-3111
- Alaska Regional Hospital: Main operator: (907) 276-1131
Transfer Center: (844) 880-5522
- Fairbanks Memorial Hospital: Main operator: (907) 452-8181
House supervisor pager: (800) 607-3974
- Mat-Su Regional Medical Center: Main operator: (907) 861-6000
Transfer Center: (907) 861-6440
- Joint Base Elmendorf Richardson Hospital:
ED: (907) 580-5556
House supervisor: (907) 580-6413
- Department of Corrections On Call: (844) 751-4588

This guideline is designed for the general use of most patients but may need to be adapted to meet the special needs of a specific patient as determined by the medical practitioner.

Approved by Clinical Guideline Committee 10/21/22.

If comments about this guideline, please contact clinical_guidelines@ykhc.org.