



Differential Diagnosis by Trimester

First

- Aneuploidy
- Fetal Anomaly

Second

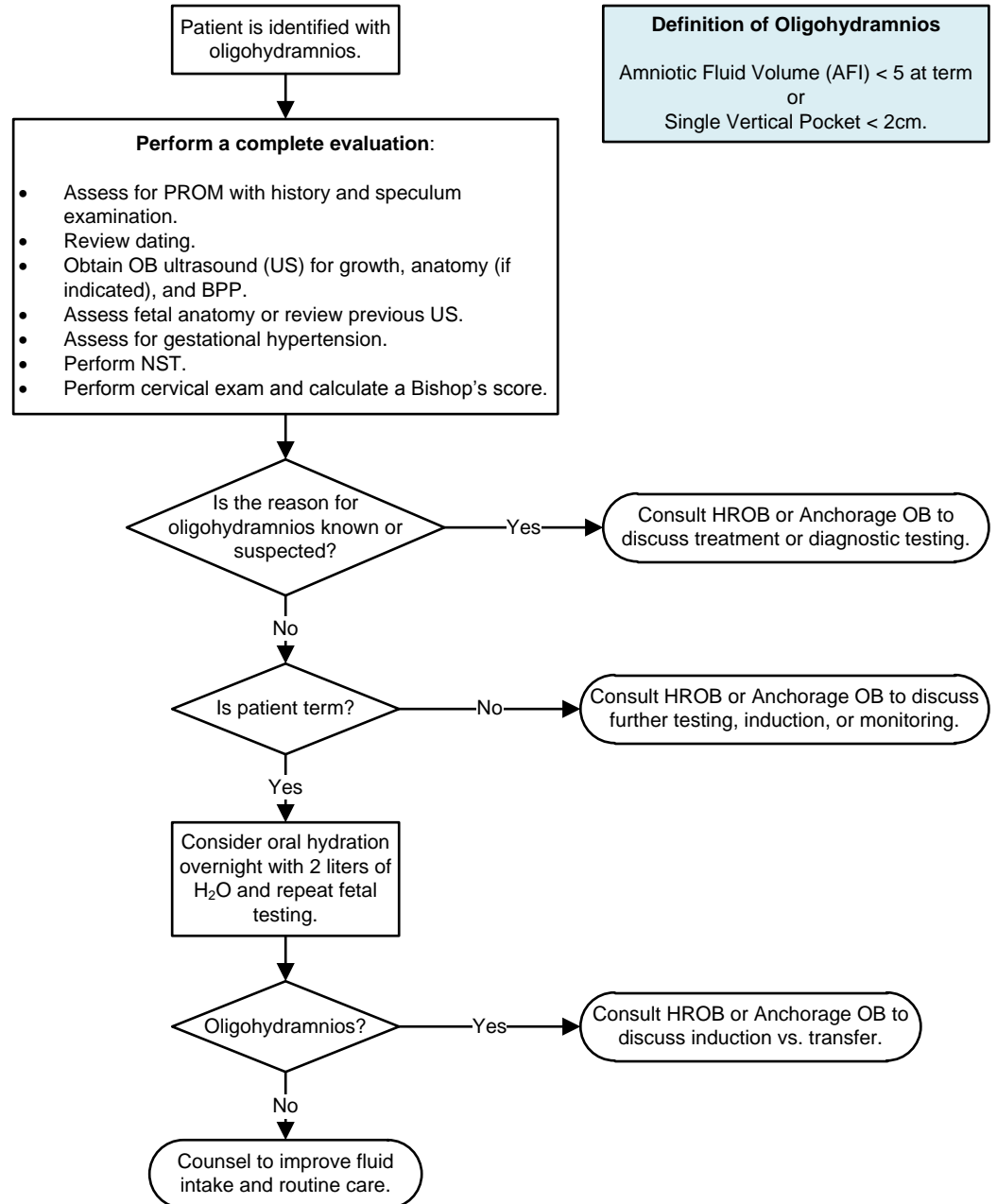
- Aneuploidy
- Fetal Anomaly
- Preterm premature rupture of membranes (PPROM)
- Placental abruption
- Fetal growth restriction
- Amniocentesis
- Elevated maternal serum alpha fetoprotein

Third

- Preterm premature rupture of membranes
- Placental abruption
- Fetal growth restriction
- Utero-placental insufficiency
- Preeclampsia
- Maternal vascular diseases
- Fetal anomaly
- Post-term
- Suboptimal maternal hydration

Definition of Oligohydramnios

Amniotic Fluid Volume (AFI) < 5 at term
or
Single Vertical Pocket < 2cm.



This guideline is designed for the general use of most patients but may need to be adapted to meet the special needs of a specific patient as determined by the medical practitioner.
Approved by MSEC 7/12/17.
If comments about this guideline, please contact
Ellen_Hodges@ykhc.org.