



### OPT OUT

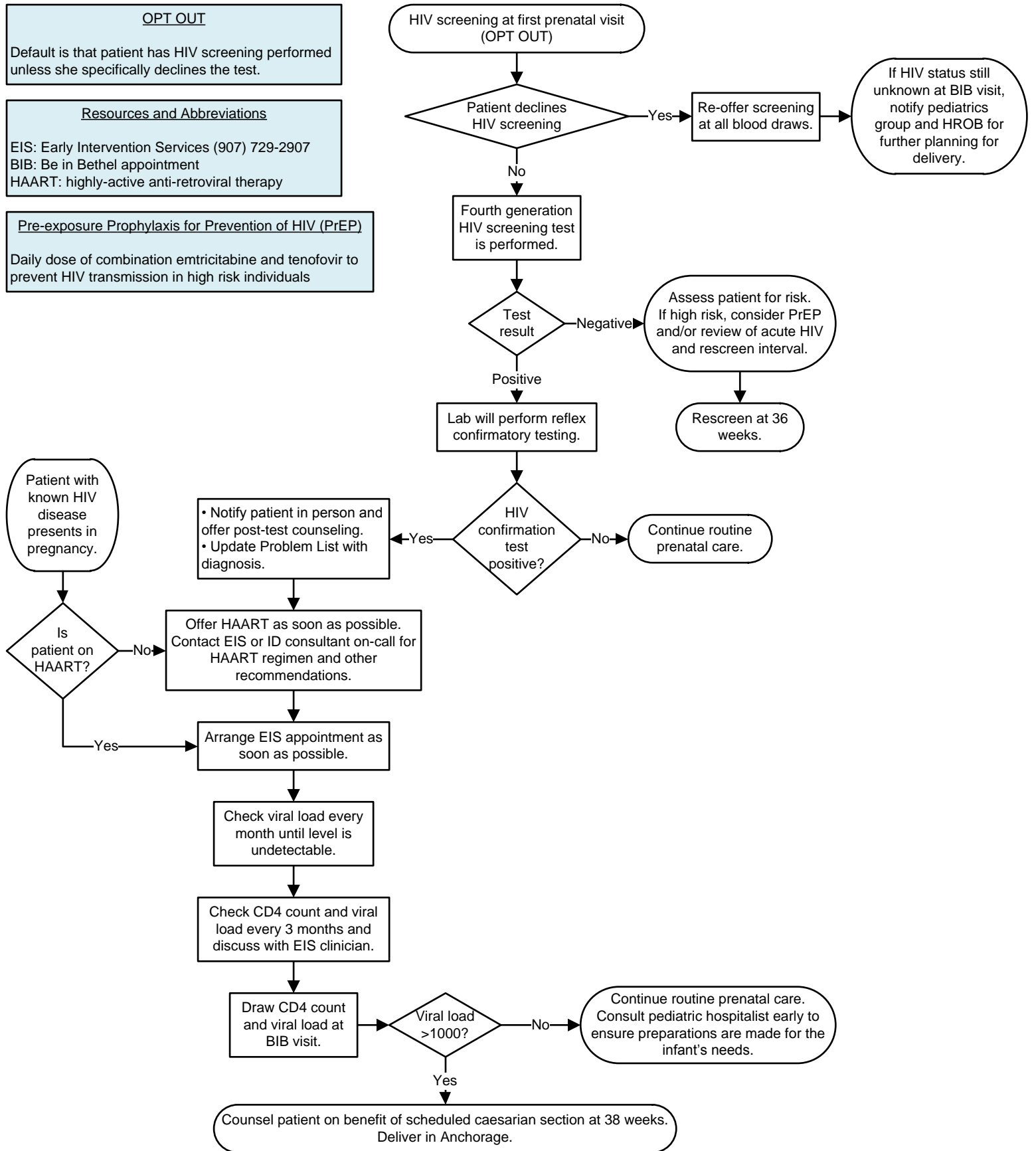
Default is that patient has HIV screening performed unless she specifically declines the test.

### Resources and Abbreviations

EIS: Early Intervention Services (907) 729-2907  
BIB: Be in Bethel appointment  
HAART: highly-active anti-retroviral therapy

### Pre-exposure Prophylaxis for Prevention of HIV (PrEP)

Daily dose of combination emtricitabine and tenofovir to prevent HIV transmission in high risk individuals



This guideline is designed for the general use of most patients but may need to be adapted to meet the special needs of a specific patient as determined by the medical practitioner. Approved by MSEC 12/2/20. Click [here](#) to see the supplemental resources for this guideline. If comments about this guideline, please contact [David.Compton@ykhc.org](mailto:David.Compton@ykhc.org).