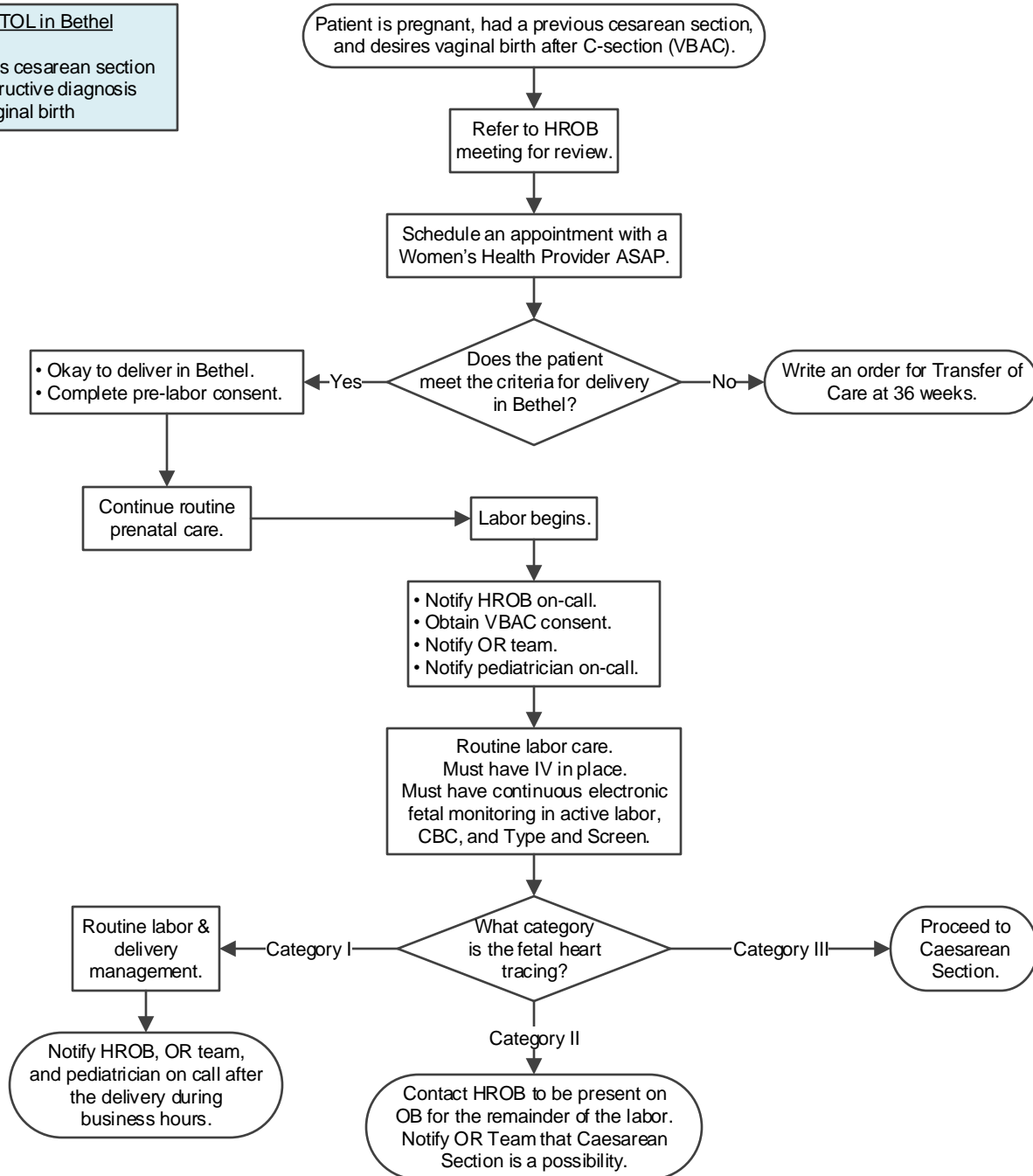




Criteria for TOL in Bethel

- Only one previous cesarean section
- No previous obstructive diagnosis
- One previous vaginal birth



This guideline is designed for the general use of most patients but may need to be adapted to meet the special needs of a specific patient as determined by the medical practitioner.
 Approved by MSEC 3/1/22.
If comments about this guideline, please contact Ellen_Hodges@ykhc.org.