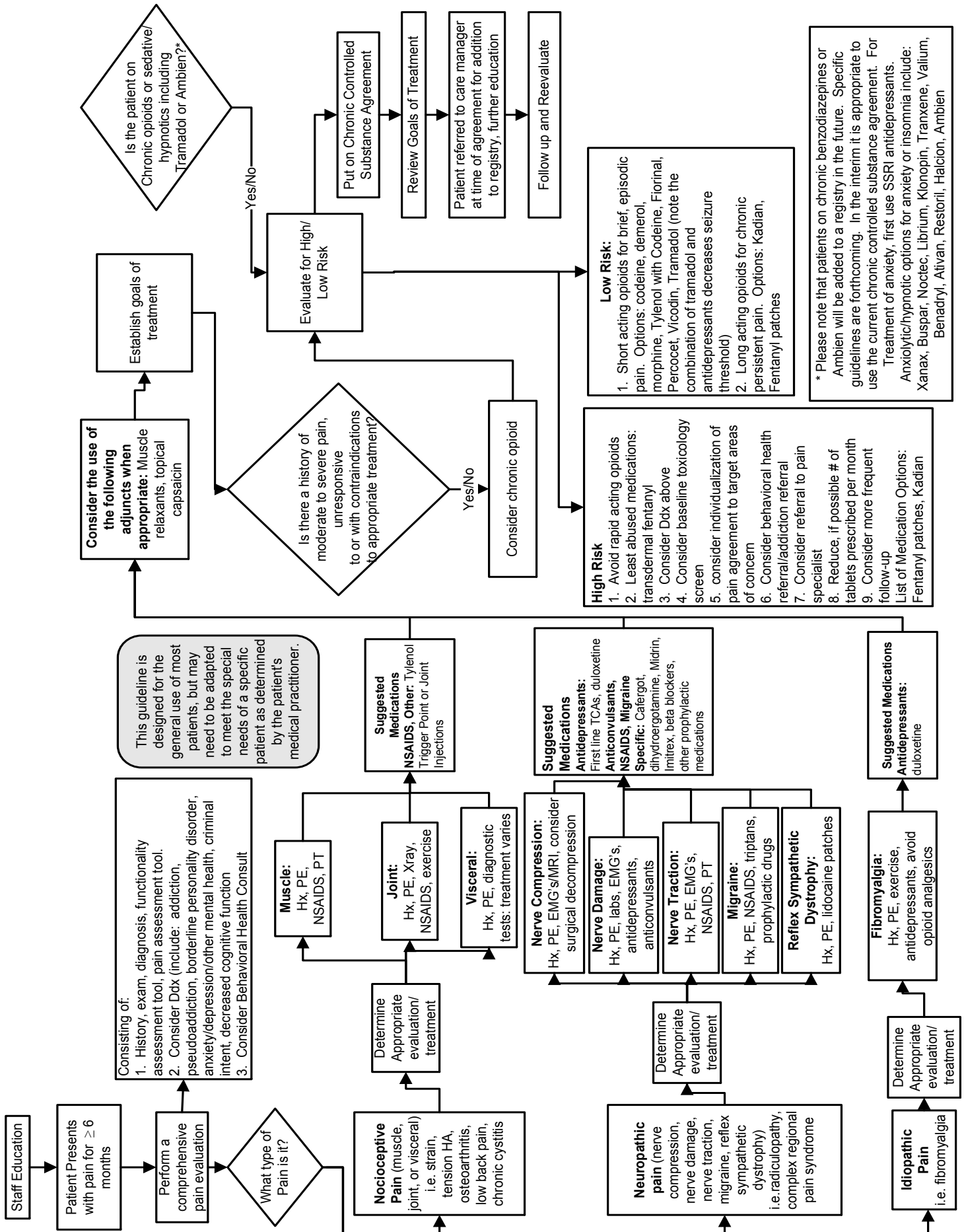


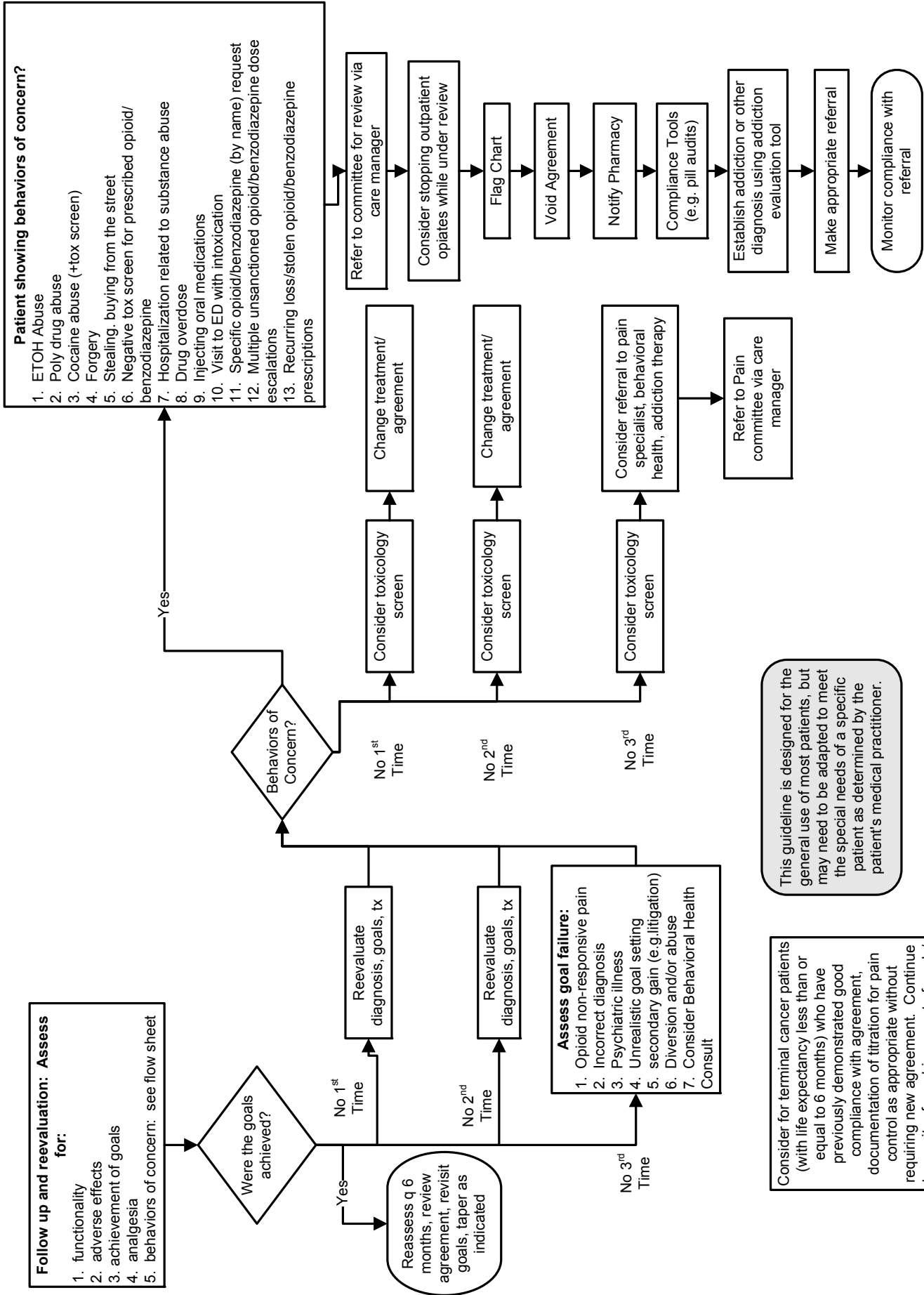
# Chronic Pain - p.1

MSEC reviewed and approved 06/22/11



Chronic Pain - p.2

MSEC reviewed and approved 06/22/11



This guideline is designed for the general use of most patients, but may need to be adapted to meet the special needs of a specific patient as determined by the patient's medical practitioner.

Consider for terminal cancer patients (with life expectancy less than or equal to 6 months) who have previously demonstrated good compliance with agreement, documentation of titration for pain control as appropriate without requiring new agreement. Continue to monitor for achievement of goals/behaviors of concern.