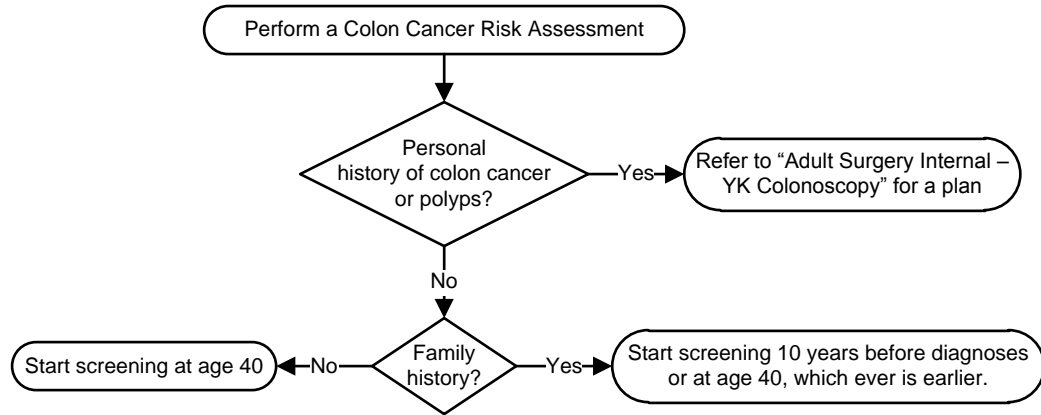
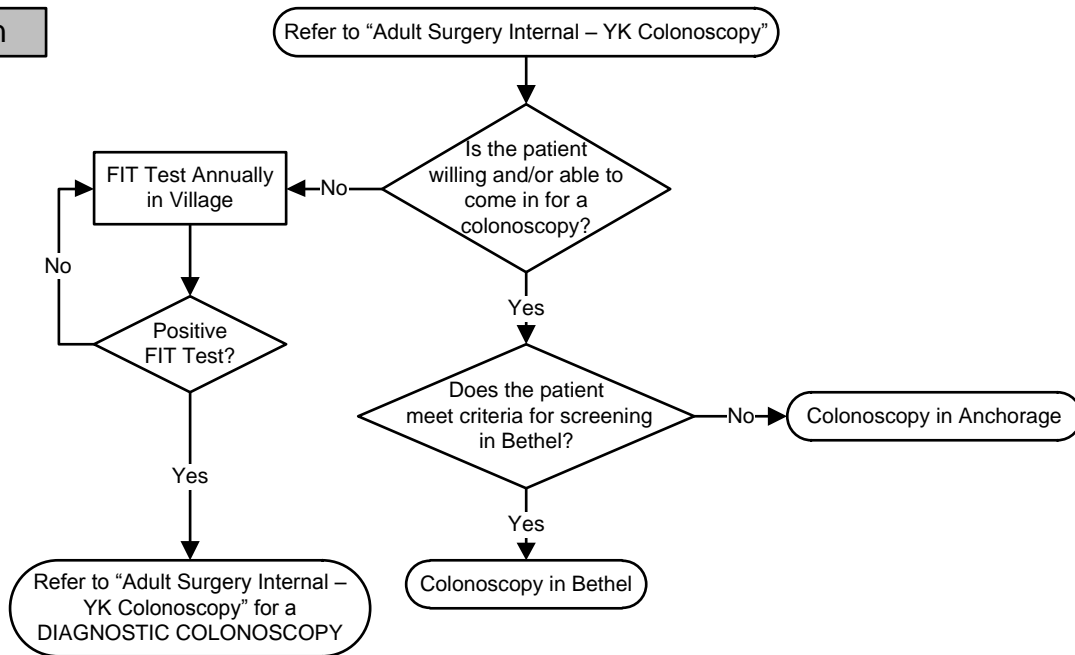




#### When to Screen



#### How to Screen



This guideline is designed for the general use of most patients but may need to be adapted to meet the special needs of a specific patient as determined by the medical practitioner.  
 Approved by MSEC 12/14/16.  
**If comments about this guideline, please contact [Ellen\\_Hodges@ykhc.org](mailto:Ellen_Hodges@ykhc.org).**