

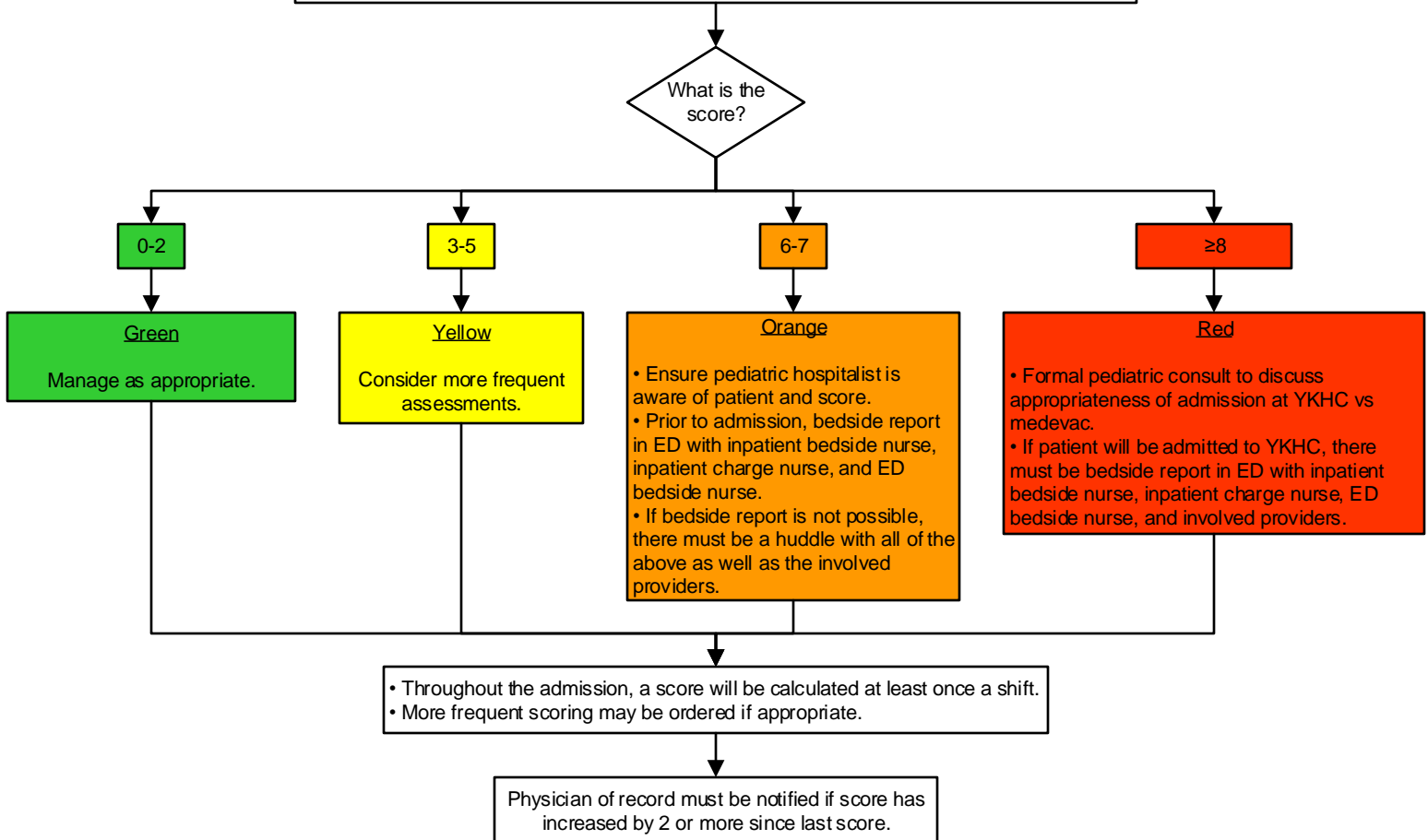


#### mPEWS (modified Pediatric Early Warning System)

- YKHC uses the mPEWS to monitor admitted pediatric patients. Scoring is required prior to and throughout admissions to screen patients for acuity and help determine appropriate disposition.
- This is a scoring system that can help identify patients at risk for deterioration. YKHC uses it as a communication tool to highlight these patients.
- The score is calculated using the Ad Hoc form called "mPEWS," found in three places: (1) in ER encounters, under "mPEWS;" (2) in inpatient encounters, under "Assessments" → "mPEWS;" and in other encounters in "Asmt/Tx/Monitoring" folder.

Scoring details can be found at [this link](#).

- The ED will calculate a score prior to admission to the inpatient unit using the most recent vital signs and several aspects of PMH. If PMH unclear, the provider of record will clarify.
- Upon admission, the Inpatient Unit will calculate a score using the first vital signs taken.



This protocol is designed for the general use of most patients but may need to be adapted to meet the special needs of a specific patient as determined by the medical practitioner.  
Approved by MSEC 3/1/22.

If comments about this guideline, please contact [Leslie\\_Herrmann@ykhc.org](mailto:Leslie_Herrmann@ykhc.org).