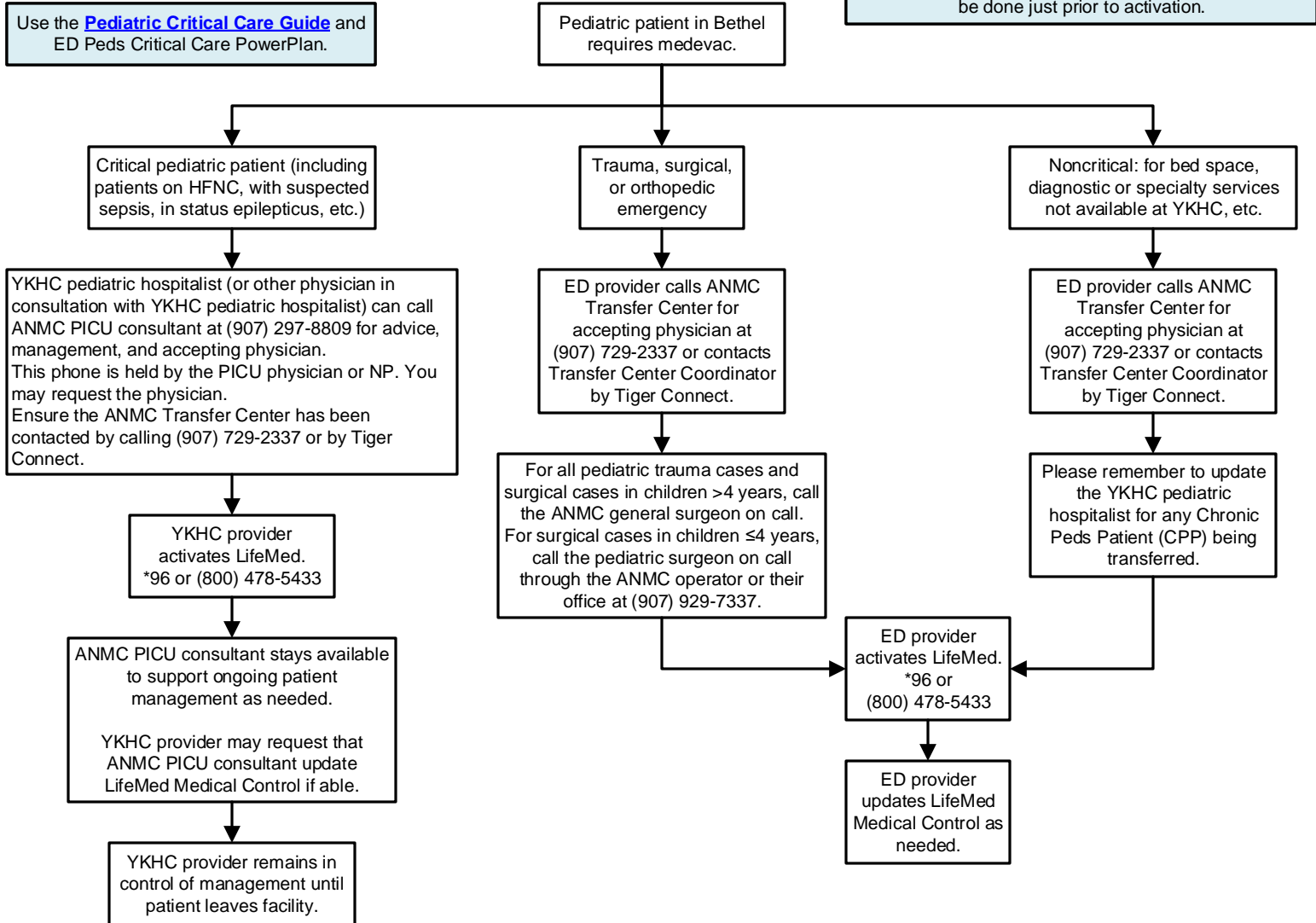




Call YKHC pediatric hospitalist via Tiger Connect "Peds Wards On Duty" for all potentially critical pediatric patients.

Use the [Pediatric Critical Care Guide](#) and ED Peds Critical Care PowerPlan.

Remember: non-beneficiary patients are transferred to Providence Alaska Medical Center. Call their PICU at (907) 212-3133 to obtain accepting physician (PICU or hospitalist). Ask about medevac insurance coverage. May suggest family [register for LifeMed insurance](#) online, which can be done just prior to activation.



Neonatal Transfers

Contact PAMC neonatologist at (907) 212-3614 for advice, management recommendations, etc.

Notify ANMC pediatric hospitalist on-call for any beneficiary infant transferred to PAMC NICU.

When to Transfer to PAMC NICU:

- GA <32 weeks
- BW <1500 grams
- Any newborn who required intubation
- Newborns requiring prompt surgical or medical subspecialty care
- No beds available at ANMC or non-beneficiary infant requiring transfer
- Discretion of NNP

When to Transfer to ANMC NICU:

- GA 32-34 weeks
- BW 1500-2200 grams
- Any baby who meets criteria for transfer per the Late Preterm guideline
- Term or early term babies with temperature instability, respiratory distress, supplemental O₂ requirement, hypoglycemia requiring IV treatment, need for IV antibiotics, etc.

This guideline is designed for the general use of most patients but may need to be adapted to meet the special needs of a specific patient as determined by the medical practitioner. Approved by MSEC 6/8/21. Click [here](#) to see the supplemental resources for this guideline. If comments about this guideline, please contact Leslie_Herrmann@ykhc.org.