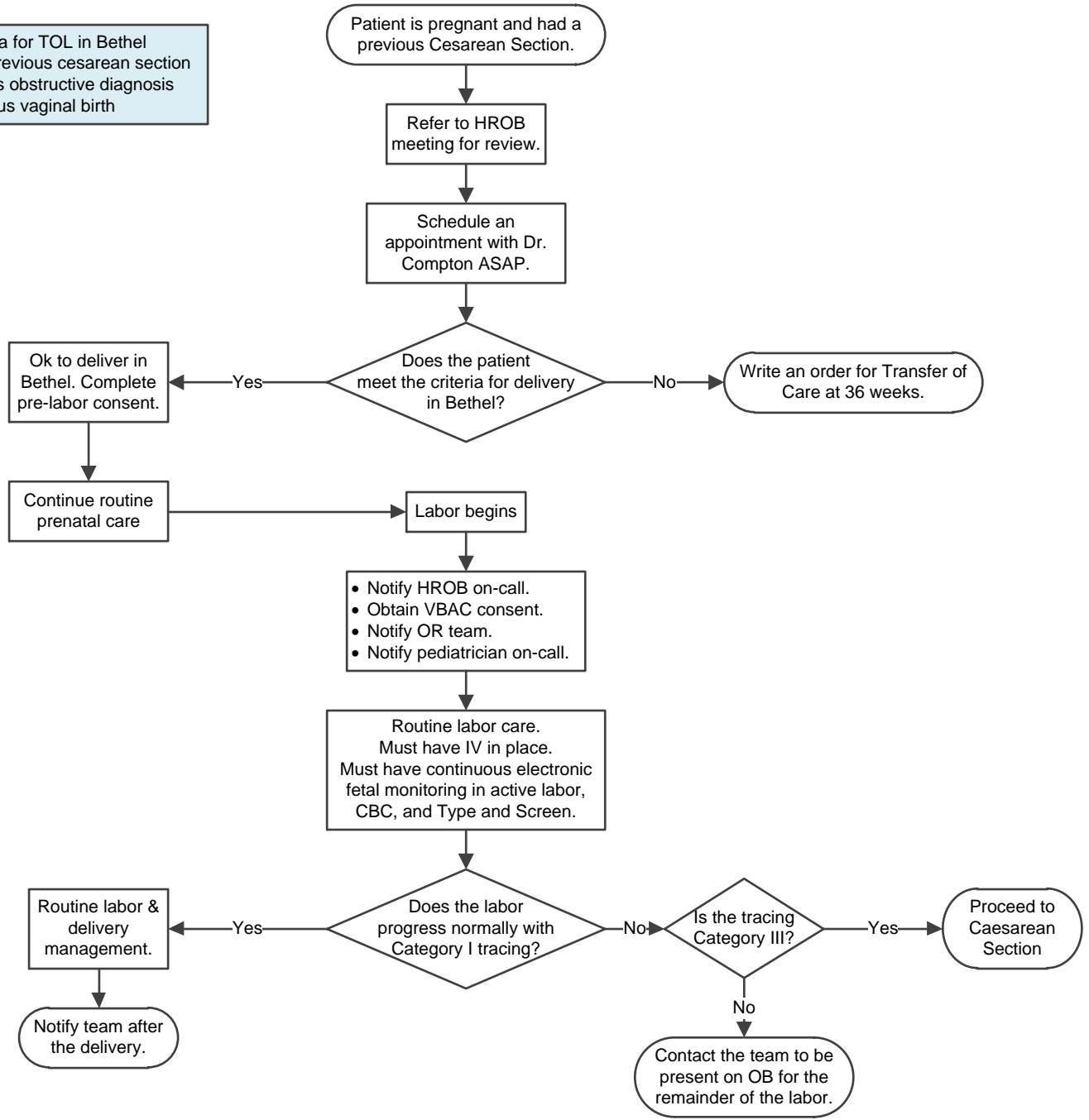




- Criteria for TOL in Bethel
- Only one previous cesarean section
 - No previous obstructive diagnosis
 - One previous vaginal birth



This guideline is designed for the general use of most patients but may need to be adapted to meet the special needs of a specific patient as determined by the medical practitioner.
 Approved by MSEC unknown date.
If comments about this guideline, please contact Ellen_Hodges@ykhc.org.