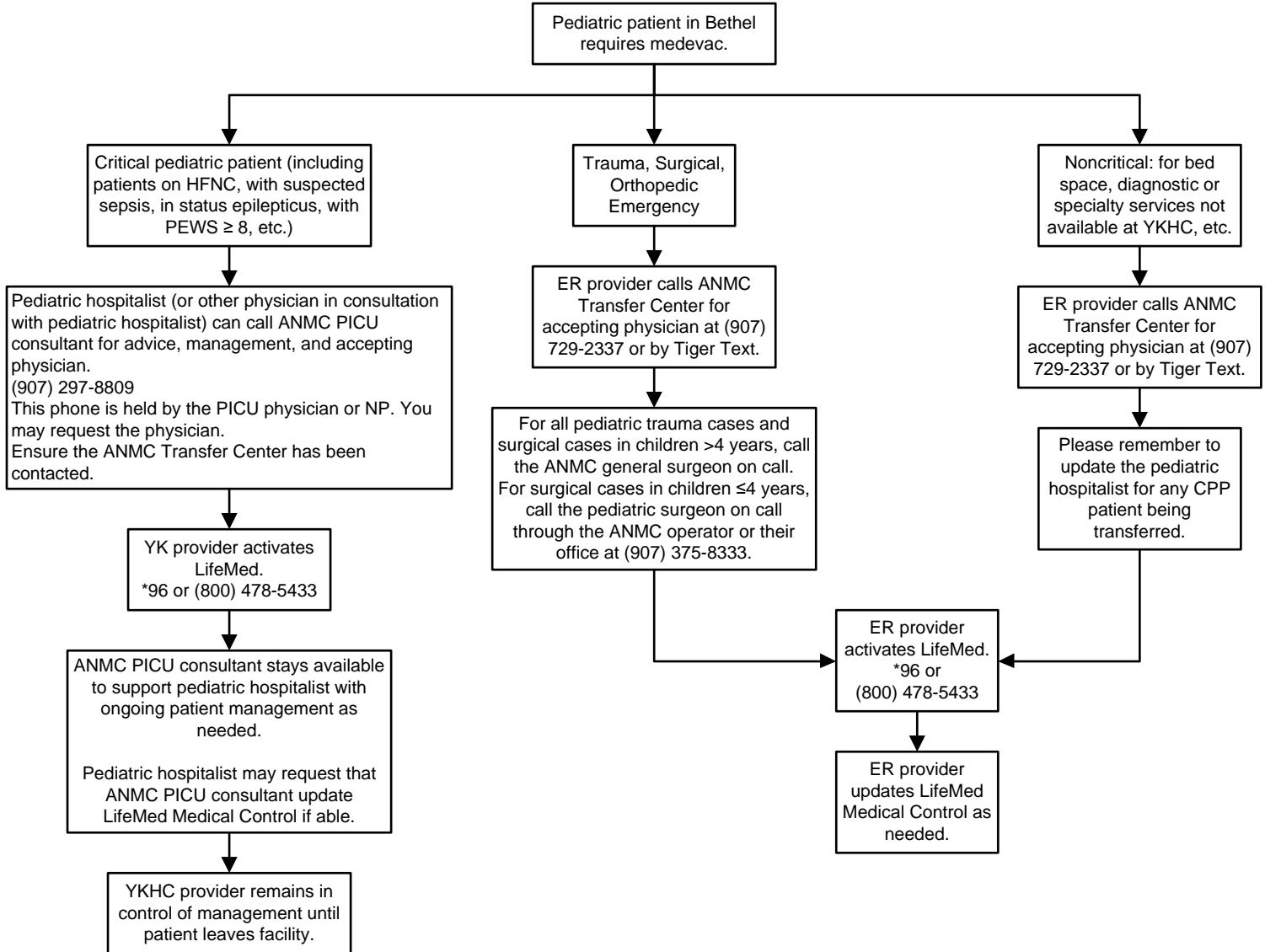




**Call pediatric hospitalist for all potentially critical pediatric patients.**

Remember: non-beneficiary patients are transferred to Providence Alaska Medical Center. Call their PICU at (907) 212-3133 to obtain accepting physician (PICU or hospitalist). Ask about medevac insurance coverage.



**Use the Pediatric Critical Care Guide and ED Peds Critical Care PowerPlan.**