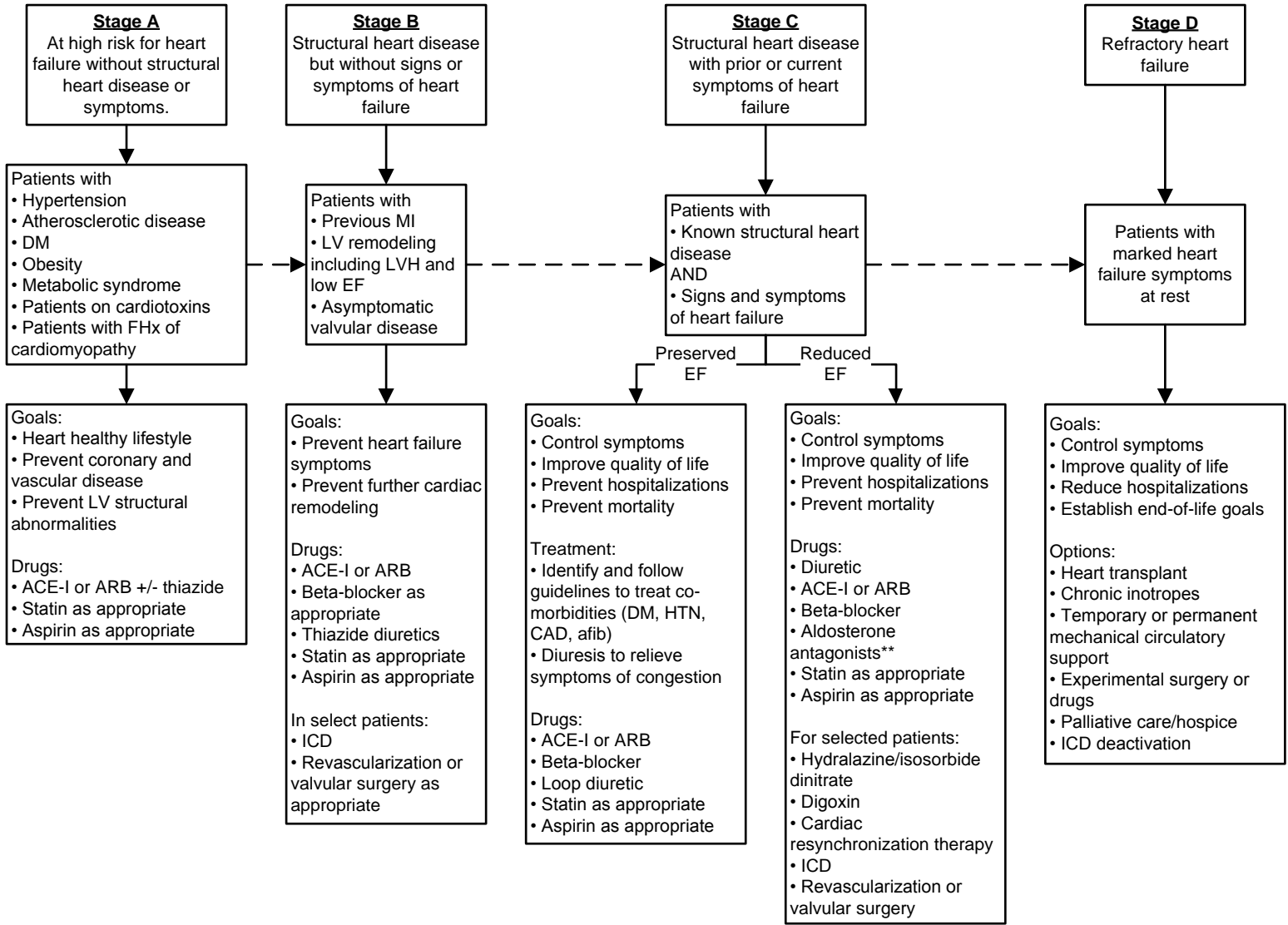


This guideline is designed for the general use of most patients but may need to be adapted to meet the special needs of a specific patient as determined by the medical practitioner.
Approved by MSEC 7/12/17.

If comments about this guideline, please contact Ellen_Hodges@ykhc.org.



Calcium channel blocker contraindicated in Stage C.

**Aldosterone antagonists:
• Use for estimated creatinine clearance > 30 and potassium < 5.
• Check BMP at baseline, day 2, day 7, monthly x3, Q3 mo x1 year, then Q6 mo