

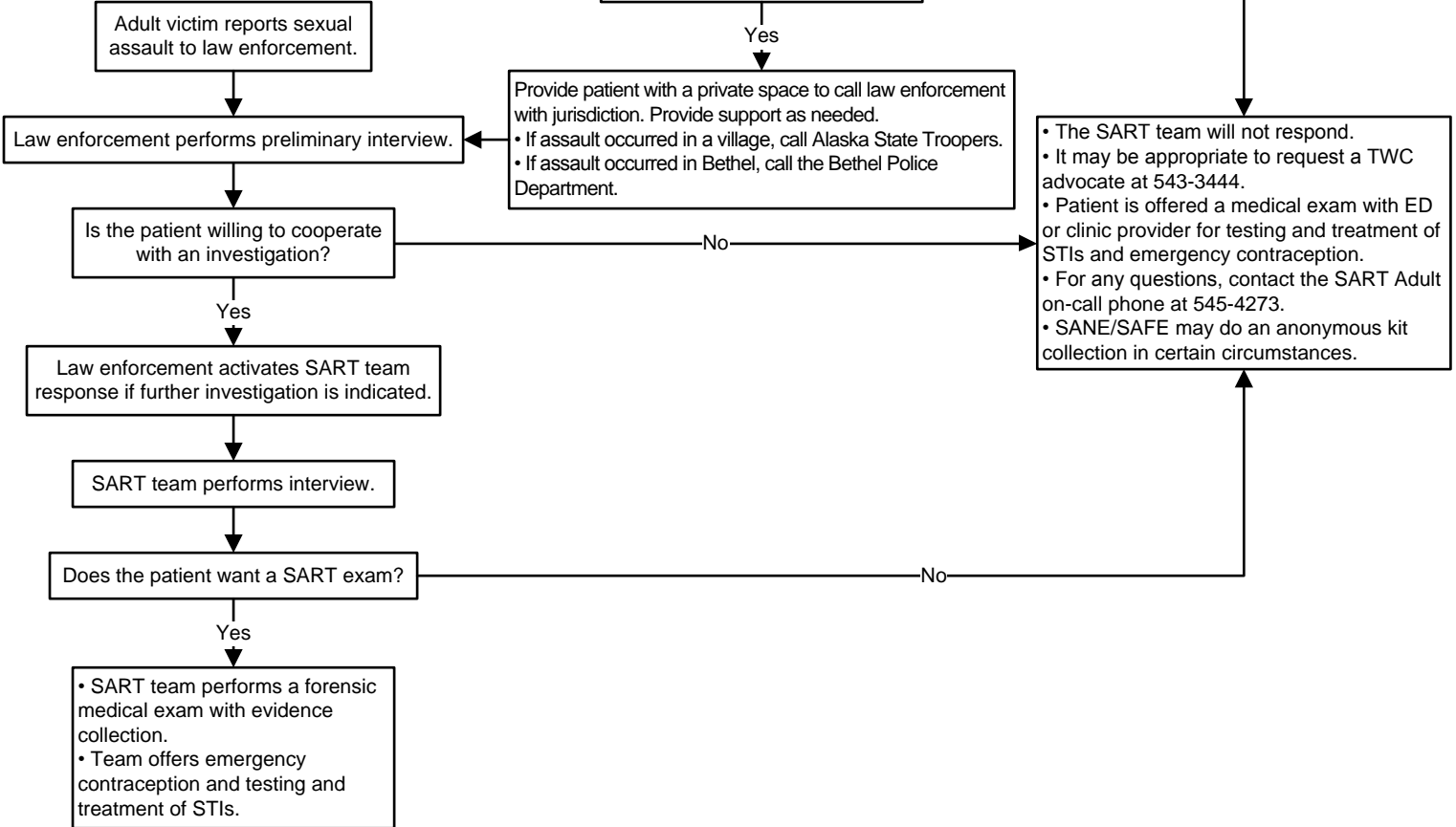


**\*\*Note:** When an adult patient discloses a sexual assault, it is his or her choice to report to law enforcement. Reporting without a patient's consent may breach his or her confidentiality. A SART exam/kit can only be conducted by a trained SAFE/SANE. Law enforcement must be involved, unless the patient wishes to have an anonymous kit collection.

Adult victim reports sexual assault to ED or clinic staff.

If patient is <18 years, please see [Pediatric Sexual Abuse Procedure](#).

Does patient want to report to law enforcement? (See **\*\*Note.**)



**SART Team Members**

- Law enforcement
- SANE/SAFE (Sexual Assault Nurse Examiner/Sexual Assault Forensic Examiner)
- TWC advocate

**Contact Information**

- **Tundra Women's Coalition:**  
Business Line: (907) 543-3444  
Crisis Line: (907) 543-3456  
Toll Free: (800) 478-7799
- **Law Enforcement:**  
Bethel Police Department: (907) 543-3781  
Bethel Post of Alaska State Troopers: (907) 543-2294  
Aniak Post of Alaska State Troopers: (907) 675-4459  
Emmonak Post of Alaska State Troopers: (866) 949-1303  
St. Mary's Post of Alaska State Troopers: (907) 438-2019
- **National Sexual Assault Helpline:**  
(800) 656-4673  
Available 24 hours a day, 7 days a week.

This guideline is designed for the general use of most patients but may need to be adapted to meet the special needs of a specific patient as determined by the medical practitioner. Approved by MSEC 12/2/20. Click [here](#) to see the supplemental resources for this guideline. **If comments about this guideline, please contact Jennifer\_Prince3@ykhc.org.**