



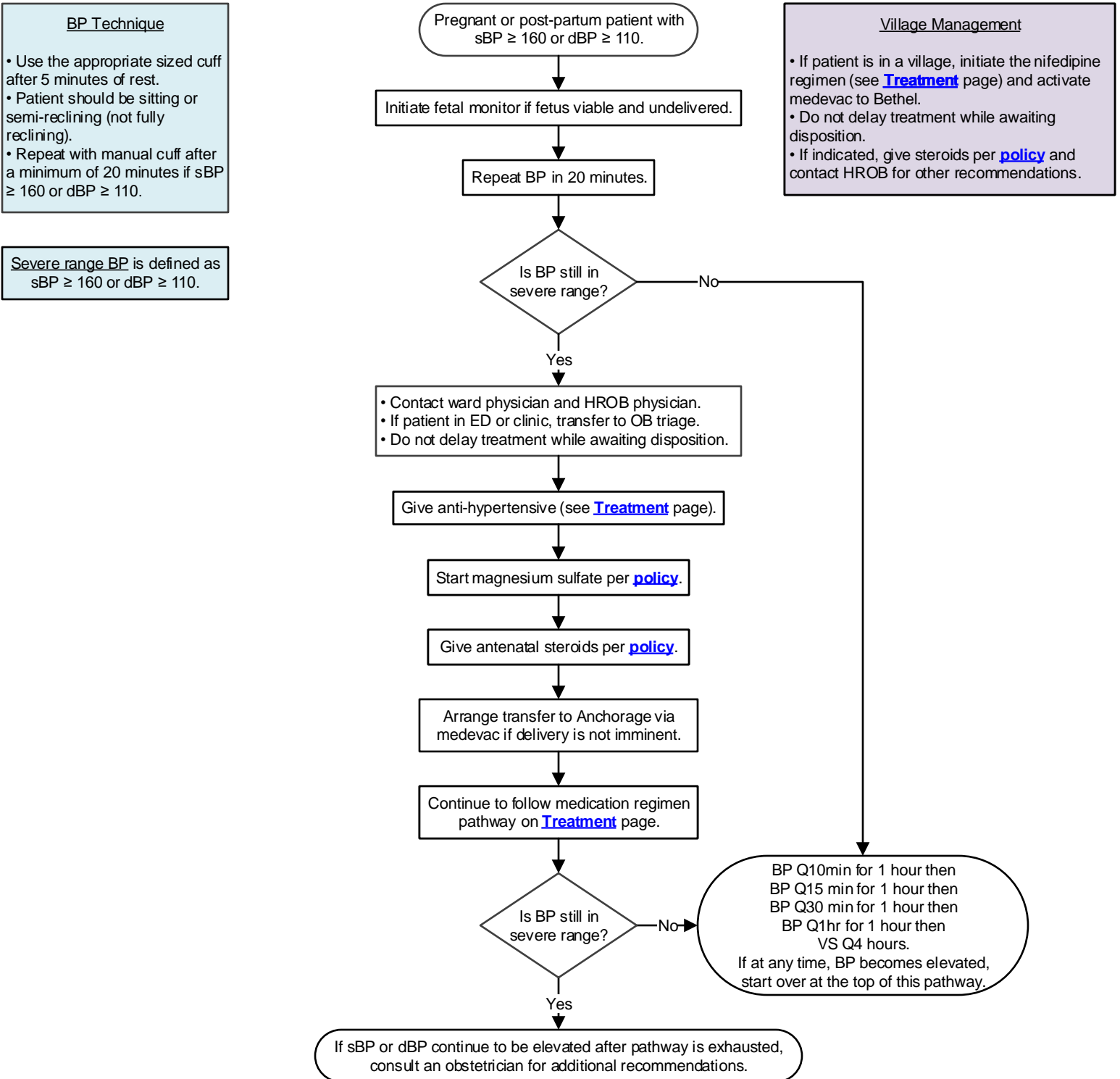
### BP Technique

- Use the appropriate sized cuff after 5 minutes of rest.
- Patient should be sitting or semi-reclining (not fully reclining).
- Repeat with manual cuff after a minimum of 20 minutes if sBP  $\geq 160$  or dBP  $\geq 110$ .

Severe range BP is defined as sBP  $\geq 160$  or dBP  $\geq 110$ .

### Village Management

- If patient is in a village, initiate the nifedipine regimen (see [Treatment](#) page) and activate medevac to Bethel.
- Do not delay treatment while awaiting disposition.
- If indicated, give steroids per [policy](#) and contact HROB for other recommendations.



This guideline is designed for the general use of most patients but may need to be adapted to meet the special needs of a specific patient as determined by the medical practitioner.  
Approved by Clinical Guideline Committee 11/27/22.

Click [here](#) to see the supplemental resources for this guideline.

If comments about this guideline, please contact David\_Compton@ykhc.org.



Severe range BP is defined as  
sBP ≥ 160 or dBP ≥ 110.

Anti-hypertensive  
Medication Regimens

After two severe range BPs have been verified, choose one regimen.  
Follow pathway until sBP < 160 and dBP < 110. At that time, return to first page for further management.

Give nifedipine (immediate release) 10 mg PO.

Repeat BP in 20 minutes.

If BP still in severe range, give nifedipine  
(immediate release) 20 mg PO.

Repeat BP in 20 minutes.

If BP still in severe range, give nifedipine  
(immediate release) 20 mg PO.

Repeat BP in 20 minutes.

If BP still in severe range,  
give labetalol 40 mg IV.

Give labetalol 20 mg IV.

Repeat BP in 20 minutes.

If BP still in severe range,  
give labetalol 40 mg IV.

Repeat BP in 20 minutes.

If BP still in severe range,  
give labetalol 80 mg IV.

Repeat BP in 20 minutes.

If BP still in severe range,  
give hydralazine 10 mg IV.

Give hydralazine 5 mg IV.

Repeat BP in 20 minutes.

If BP still in severe range,  
give hydralazine 10 mg IV.

Repeat BP in 20 minutes.

If BP still in severe range,  
give hydralazine 10 mg IV.

Repeat BP in 20 minutes.

If BP still in severe range,  
give labetalol 40 mg IV.

If sBP or dBP continue to be in severe range after pathway is  
exhausted, consult an obstetrician for additional recommendations.

### Village Management

- If patient is in a village, initiate the nifedipine regimen and activate medevac to Bethel.
- Do not delay treatment while awaiting disposition.
- If indicated, give steroids per [policy](#) and contact HROB for other recommendations.

This guideline is designed for the general use of most patients but may need to be adapted to meet the special needs of a specific patient as determined by the medical practitioner.

Approved by Clinical Guideline Committee 11/27/22.

Click [here](#) to see the supplemental resources for this guideline.

If comments about this guideline, please contact [David\\_Compton@ykhc.org](mailto:David_Compton@ykhc.org).